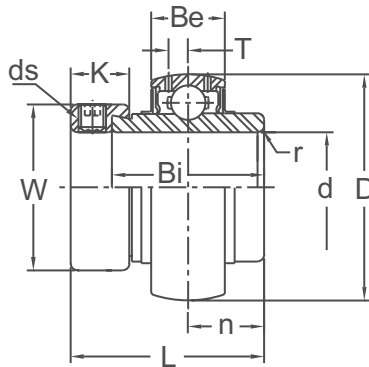




UG / UGW 200

BALL BEARINGS

NORMAL DUTY



**Eccentric Locking
Wide Inner Ring
Steel Cage
AISI 52100 Steel
0°F - 212°F
Contact Seal and Slinger
Inch and Metric**

Shaft Diam. (in.) d	AMI Unit #	List Price	Dimensions (in.)										Basic Load Rating (lbf.)		Weight (lb.)
			D	L	Bi	Be	r	n	T	W	K	ds(UNF)	Dynamic Cr	Static Cor	
1/2	UGW201-8	32.80	1.5748	1-15/32	1-3/32	0.591	0.039	35/64	0.157	1-1/8	17/32	1/4-28	2150	1080	0.35
5/8	UGW202-10														
3/4	UG204-12	32.80	1.8504	1-23/32	1-11/32	0.669	0.059	43/64	0.177	1-5/16	17/32	1/4-28	2890	1500	0.46
7/8	UG205-14														
15/16	UG205-15	41.10	2.0472	1-3/4	1-3/8	0.669	0.059	11/16	0.177	1-1/2	17/32	1/4-28	3150	1780	0.51
1	UG205-16														
1-1/8	UG206-18														
1-3/16	UG206-19	48.40	2.4409	1-29/32	1-7/16	0.748	0.059	23/32	0.201	1-3/4	5/8	5/16-24	4410	2540	0.82
1-1/4	UG206-20														
1-1/4	UG207-20*														
1-5/16	UG207-21*	63.70	2.8346	2-1/64	1-31/64	0.787	0.079	0.740	0.228	2-3/16	11/16	3/8-24	5820	3460	1.32
1-3/8	UG207-22*														
1-7/16	UG207-23*														
1-1/2	UG208-24*	75.50	3.1496	2-7/32	1-11/16	0.827	0.079	27/32	0.244	2-3/8	23/32	3/8-24	6590	4020	1.68
1-9/16	UG208-25**														
1-5/8	UG209-26*														
1-11/16	UG209-27*	82.50	3.3465	2-7/32	1-11/16	0.866	0.079	27/32	0.256	2-1/2	23/32	3/8-24	7420	4610	1.74
1-3/4	UG209-28*														
1-7/8	UG210-30*														
1-15/16	UG210-31*	87.00	3.5433	2-15/32	1-15/16	0.906	0.079	31/32	0.256	2-3/4	23/32	3/8-24	7940	5220	2.01
2	UG210-32*														
2	UG211-32														
2-1/8	UG211-34	118.10	3.9370	2-13/16	2-3/16	0.945	0.098	1-3/32	0.287	3	13/16	7/16-20	9700	6610	2.78
2-3/16	UG211-35														
2-1/4	UG212-36														
2-3/8	UG212-38	147.40	4.3307	3-1/16	2-7/16	1.024	0.098	1-7/32	0.303	3-5/16	7/8	7/16-20	11800	8120	3.75
2-7/16	UG212-39														
			Dimensions (mm)										Basic Load Rating (kgf.)		
20	UG204	32.80	47	43.7	34.2	17	1.5	17.1	4.5	33.3	13.5	M6x0.75	1310	680	0.47
25	UG205	41.10	52	44.4	34.9	17	1.5	17.5	4.5	38.1	13.5	M6x0.75	1430	800	0.51
30	UG206	48.40	62	48.4	36.5	19	1.5	18.3	5.1	44.5	15.9	M8x1	2000	1150	0.83
35	UG207*	63.70	72	51.1	37.6	20	2	18.8	5.8	55.6	17.5		2640	1570	1.34
40	UG208*	75.50	80	56.3	42.8	21	2	21.4	6.2	60.3	18.3	M10x1.25	2990	1830	1.69
45	UG209*	82.50	85	56.3	42.8	22	2	21.4	6.5	63.5	18.3		3350	2090	1.76
50	UG210*	87.00	90	62.7	49.2	23	2	24.6	6.5	69.9	18.3	M10x1.25	3600	2370	2.03
55	UG211	118.10	100	71.4	55.5	24	2.5	27.8	7.3	76.2	20.7	M12x1.5	4400	3000	2.81
60	UG212*	147.40	110	77.8	61.9	26	2.5	31	7.7	84.2	22.3	M12x1.5	5350	3700	3.79

NOTE: *Double Lip (RD) and Triple Lip (RT) Seals are available for these sizes. Consult AMI for pricing and availability.
Example: UC207-20RD (Double Lip) or UC207-20RT (Triple Lip), **Consult factory for availability.

INTERCHANGES: VE-2 INS-SXR G1-KRRB YG2-NL YEL2 UEL2 R-E

KH / KHR 200

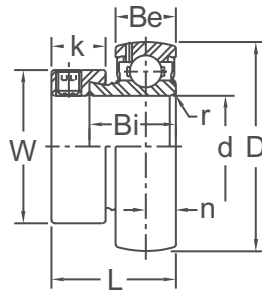
BALL BEARINGS



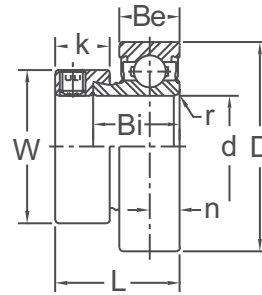
NORMAL DUTY



KH 200 Type
(Relube)



KHR 200 Type
(Non-Relube)



Eccentric Locking
Narrow Inner Ring
Steel Cage
AISI 52100 Steel
0°F - 212°F
Contact Seal
Prelubricated / Relubricatable
Inch and Metric

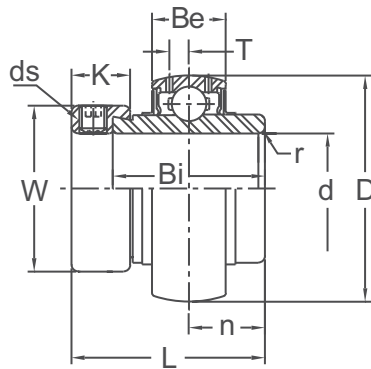
Shaft Diam. (in.) d	AMI Unit #		List Price	Dimensions (in.)								Basic Load Rating (lb.)			
				D	L	Bi	Be	r	n	W	K	ds(UNF)	Dynamic Cr	Static Cor	Weight (lb.)
1/2	KH201-8	KHR201-8	27.30	1.5748	1-1/8	0.752	0.472	0.039	0.256	1-1/8	17/32	1/4-28	2150	1080	0.26
5/8	KH202-10	KHR202-10													
3/4	KH204-12	KHR204-12	27.30	1.8504	1-7/32	0.846	0.551	0.059	0.295	1-5/16	17/32	1/4-28	2890	1500	0.35
7/8	KH205-14	KHR205-14													
15/16	KH205-15	KHR205-15	29.80	2.0472	1-7/32	0.846	0.591	0.059	0.295	1-1/2	17/32	1/4-28	3150	1780	0.44
1	KH205-16	KHR205-16													
1-1/8	KH206-18	KHR206-18	39.30	2.4409	1-13/32	0.938	0.630	0.059	0.354	1-3/4	5/8	5/16-24	4410	2540	0.68
1-3/16	KH206-19	KHR206-19													
1-1/4	KH206-20	KHR206-20													
1-1/4	KH207-20	KHR207-20	52.80	2.8346	1-17/32	1.000	0.669	0.079	0.374	2-3/16	11/16	3/8-24	5820	3460	1.08
1-5/16	KH207-21	KHR207-21													
1-3/8	KH207-22	KHR207-22													
1-7/16	KH207-23	KHR207-23													
1-1/2	KH208-24	KHR208-24	61.80	3.1496	1-23/32	1.188	0.709	0.079	0.433	2-3/8	23/32	3/8-24	6590	4020	1.37
1-5/8	KH209-26	KHR209-26													
1-11/16	KH209-27	KHR209-27	69.80	3.3465	1-23/32	1.188	0.748	0.079	0.433	2-1/2	23/32	3/8-24	7420	4610	1.43
1-3/4	KH209-28	KHR209-28													
1-7/8	KH210-30	KHR210-30	78.60	3.5433	1-23/32	1.188	0.787	0.079	0.433	2-3/4	23/32	3/8-24	7980	5220	1.65
1-15/16	KH210-31	KHR210-31													
2	KH211-32	KHR211-32	103.10	3.9370	1-29/32	1.281	0.827	0.098	0.472	3	13/16	7/16-20	9700	6610	2.07
2-3/16	KH211-35	KHR211-35													

Shaft Diam. (in.) d	AMI Unit #		List Price	Dimensions (mm)								Basic Load Rating (kgf.)			
				D	L	Bi	Be	r	n	W	K	ds(UNF)	Dynamic Cr	Static Cor	Weight (lb.)
12	KH201	KHR201	27.30	40	28.6	19.1	12	1	6.5	28.6	13.5	M6X0.75	975	490	0.27
15	KH202	KHR202													
17	KH203	KHR203													
20	KH204	KHR204	27.30	47	31	21.5	14	1.5	7.5	33.3	13.5	M6X0.75	1310	680	0.36
25	KH205	KHR205													
30	KH206	KHR206	39.30	62	35.7	23.8	16	1.5	9	44.5	15.9	M8X1	2000	1150	0.69
35	KH207	KHR207													
40	KH208	KHR208	61.80	80	43.7	30.2	18	2	11	60.3	18.3	M10X1.25	2990	1830	1.38
45	KH209	KHR209													
50	KH210	KHR210	78.60	90	43.7	30.2	20	2	11	69.9	18.3	M10X1.25	3600	2370	1.67
55	KH211	—													

INTERCHANGES: VE-1 INS-SXV RA-RRB SA2 B220 GRA-NPP W2-UL YET2 AEL2 SLE-1 WB2-UL AELS



Eccentric Locking
Wide Inner Ring
Steel Cage
AISI 52100 Steel
0°F - 212°F
Contact Seal and Slinger
Prelubricated / Relubricatable
Inch and Metric



Shaft Diam. (in.) d	AMI Unit #	List Price	Dimensions (in.)										Basic Load Rating (lbf.)		Weight (lb.)
			D	L	Bi	Be	r	n	T	W	K	ds(UNF)	Dynamic Cr	Static Cor	
1-7/16	UG307-23	142.00	3.1496	2.031	1.500	0.984	0.098	0.720	0.291	2.150	0.689	3/8-24	7530	4320	1.60
1-1/2	UG308-24	176.50	3.5433	2.248	1.626	1.063	0.098	0.780	0.323	2.484	0.783	3/8-24	9150	5380	2.60
1-11/16	UG309-27	210.30	3.9370	2.311	1.689	1.181	0.098	0.780	0.354	2.740	0.783	3/8-24	11570	6630	3.20
1-15/16	UG310-31	260.20	4.3307	2.622	1.937	1.260	0.118	0.969	0.394	2.976	0.846	3/8-24	13900	8600	4.20
2-3/16	UG311-35	338.80	4.7244	2.874	2.189	1.339	0.118	1.094	0.421	3.252	0.874	7/16-20	16100	10100	5.20
2-7/16	UG312-39	446.80	5.1181	3.126	2.437	1.417	0.138	1.220	0.453	3.469	0.941	7/16-20	18300	11700	6.20
2-11/16	UG314-43	597.75	5.9055	3.626	2.689	1.575	0.138	1.342	0.512	3.984	1.189	9/16-18	23400	15300	10.0
2-15/16 3	UG315-47 UG315-48	677.00	6.2992	3.937	2.937	1.654	0.138	1.469	0.543	4.409	1.252	5/8-18	25600	17300	12.4 12.0
			Dimensions (mm)										Basic Load Rating (kgf.)		
45	UG309	210.30	100	58.7	42.9	30.0	2.5	19.8	9.0	69.6	19.9	M10x1.25	5250	3000	3.2
50	UG310	260.20	110	66.6	49.2	32.0	3.0	24.6	10.0	75.6	21.5	M10x1.25	6300	3900	4.0
55	UG311	338.80	120	73.0	55.6	34.0	3.0	27.8	10.7	82.6	22.2	M12x1.5	7300	4600	5.2
60	UG312	446.80	130	79.4	61.9	36.0	3.5	31.0	11.5	88.1	23.9	M12x1.5	8300	5300	6.4
70	UG314	597.75	150	92.1	68.3	40.0	3.5	34.1	13.0	101.2	30.2	M14x1.5	10600	6930	9.8
75	UG315	677.00	160	100.0	74.6	42.0	3.5	37.3	13.8	112.0	31.8	M16x1.5	11600	7840	12.2
90	UG318	847.70	190	115.9	87.3	48.0	4.0	43.6	15.9	132.7	35.0	M18x1.5	14600	10900	19.8

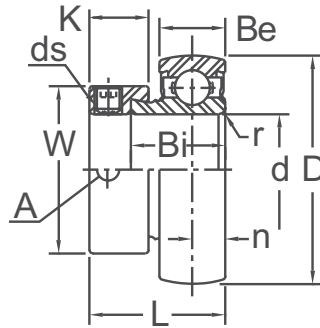
INTERCHANGES: GN-KRRB UEL3

HEAVY DUTY



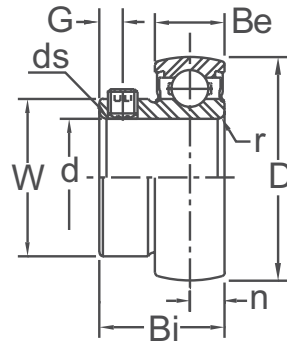
SILVER SERIES BALL BEARINGS U / URE / K / MU 000

Eccentric Locking
Extra Narrow Inner Ring
AISI 52100 Steel
0°F - 212°F
Contact Seal
Metric
URE Designates Cylindrical O.D.



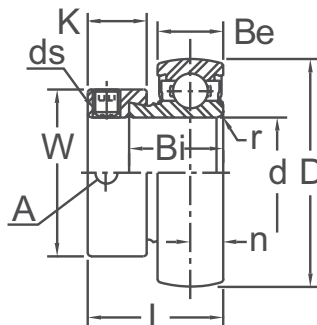
Shaft Diam. (mm)	AMI Unit #	List Price	Dimensions (mm)										Basic Load Rating (kgf.)		Weight (lb.)
			D	L	Bi	Be	r	n	K	W	A	ds	Dynamic Cr	Static Cor	
10	U000	27.10	26	17.5	11	8	0.5	4	8.5	17	3.5		470	200	0.07
12	U001	28.50	28	17.5	11	8	0.5	4	8.5	19	3.5	M4x0.7	520	245	0.08
15	U002	29.60	32	18.5	12	9	0.5	4.5	8.5	22	3.5		570	290	0.11
17	U003	34.40	35	20.5	13.5	10	0.5	5	9.5	25	3.5	M4x0.7	610	335	0.14
20	U004	37.90	42	24.5	16.5	12	1	6	11	30	5	M5x0.8	955	515	0.23
25	U005	44.40	47	25.5	17.5	12	1	6	12	36	5	M5x0.8	1030	595	0.30
30	U006	52.70	55	26.5	18.5	13	1.5	6.5	12	42	5	M5x0.8	1350	845	0.42
35	U007	56.20	62	29.5	20	14	1.5	7	13.5	48	5	M6x0.75	1625	1050	0.56
20 3/4	URE004 URE004-12	37.90	42	24.5	16.5	12	1	6	11	30	5	M5x0.8	955	515	0.23

Set-Screw Locking
Extra Narrow Inner Ring
AISI 52100 Steel
0°F - 212°F
Contact Seal
Metric



Shaft Diam. (mm)	AMI Unit #	List Price	Dimensions (mm)								Basic Load Rating (kgf.)		Weight (lb.)
			D	Bi	Be	r	n	G	W	ds	Dynamic Cr	Static Cor	
10	K000	31.50	26	14	8	0.5	4	3	14.75	M3x0.35	470	200	0.05
12	K001	34.40	28	14.5	8	0.5	4	3	17.35	M3x0.35	520	245	0.06
15	K002	35.60	32	16.5	9	0.5	4.5	3.5	20.02	M4x0.50	570	290	0.10
17	K003	37.85	35	17.5	10	0.5	5	3.5	23.10	M4x0.50	610	335	0.11
20	K004	44.20	42	21	12	1	6	4	27.00	M5x0.50	955	515	0.19
25	K005	46.10	47	22.5	12	1	6	4.5	31.70	M5x0.50	1030	595	0.22
30	K006	56.80	55	24.5	13	1.5	6.5	5	38.00	M5x0.50	1350	845	0.32

Eccentric Locking
Extra Narrow Inner Ring
440C Stainless Steel Bearing
0°F - 212°F
Contact Seal
Metric



Shaft Diam. (mm)	AMI Unit #	List Price	Dimensions (mm)										Basic Load Rating (kgf.)		Weight (lb.)
			D	L	Bi	Be	r	n	k	W	A	ds	Dynamic Cr	Static Cor	
10	MU000	82.00	26	17.5	11	8	0.5	4	8.5	17	3.5		400	160	0.07
12	MU001		28	17.5	11	8	0.5	4	8.5	19	3.5	M4x0.7	440	195	0.08
15	MU002		32	18.5	12	9	0.5	4.5	8.5	22	3.5		485	230	0.11
17	MU003	86.60	35	20.5	13.5	10	0.5	5	9.5	25	3.5	M4x0.7	520	270	0.14
20	MU004	96.60	42	24.5	16.5	12	1	6	11	30	5	M5x0.8	810	410	0.23
25	MU005	116.30	47	25.5	17.5	12	1	6	12	36	5	M5x0.8	875	475	0.30
30	MU006	149.50	55	26.5	18.5	13	1.5	6.5	12	42	5	M5x0.8	1150	675	0.42